

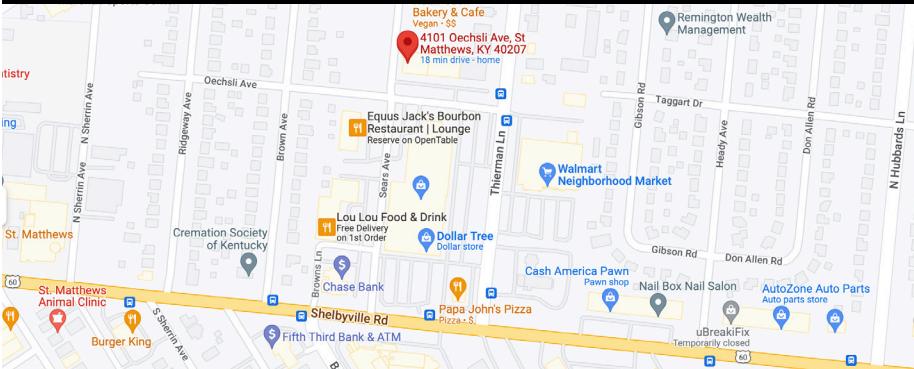


# THE GALLERIA OF ST. MATTHEWS

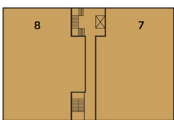
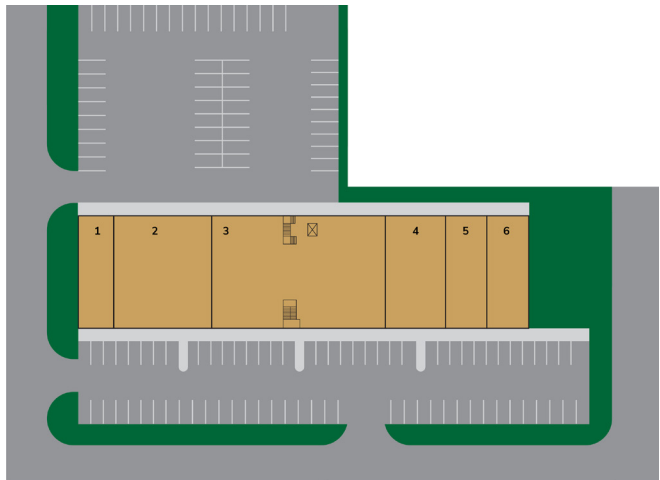
The Galleria is a two story new construction retail and office building located in the heart of Saint Matthews. The 30,000 sf building sits on two acres with a large parking field and exposure to Shelbyville Rd. The site is home to Mays Plastic Surgery and Medspa, Fit Body Fitness, Fritz Hair Salon, and the new offices to Kaden Companies.

 4101 Oechsli Avenue, Saint Matthews, Kentucky 40207

 Leasing Contact




**Quinn Andrews**  
502.456.1999 Ext. 107  
qandrews@kadencompanies.com



## SITE PLAN

| SPACE | TENANT    | AREA        |
|-------|-----------|-------------|
| 1     | AVAILABLE | 1,834 sq ft |
| 6     | AVAILABLE | 1,754 sq ft |

## EXISTING TENANTS

- |   |                      |   |                    |   |                             |
|---|----------------------|---|--------------------|---|-----------------------------|
| 1 | AVAILABLE 1,853 sf   | 4 | Fritz Hair Salon   | 7 | Kaden Companies (2nd Floor) |
| 2 | Fit Body Boot Camp   | 5 | Coming Soon        | 8 | Mays Med Spa (2nd Floor)    |
| 3 | Mays Plastic Surgery | 6 | AVAILABLE 1,754 sf |   |                             |

## AVAILABLE FOR LEASE



1

1,834 sq ft



6

1,754 sq ft



## THE PROPERTY

### MARKET

Saint Matthews, KY

### AREA

30,000 sq ft

### SPACES AVAILABLE

2